

臂架组合方案

Boom / Jib combinations



主臂
Telescopic boom

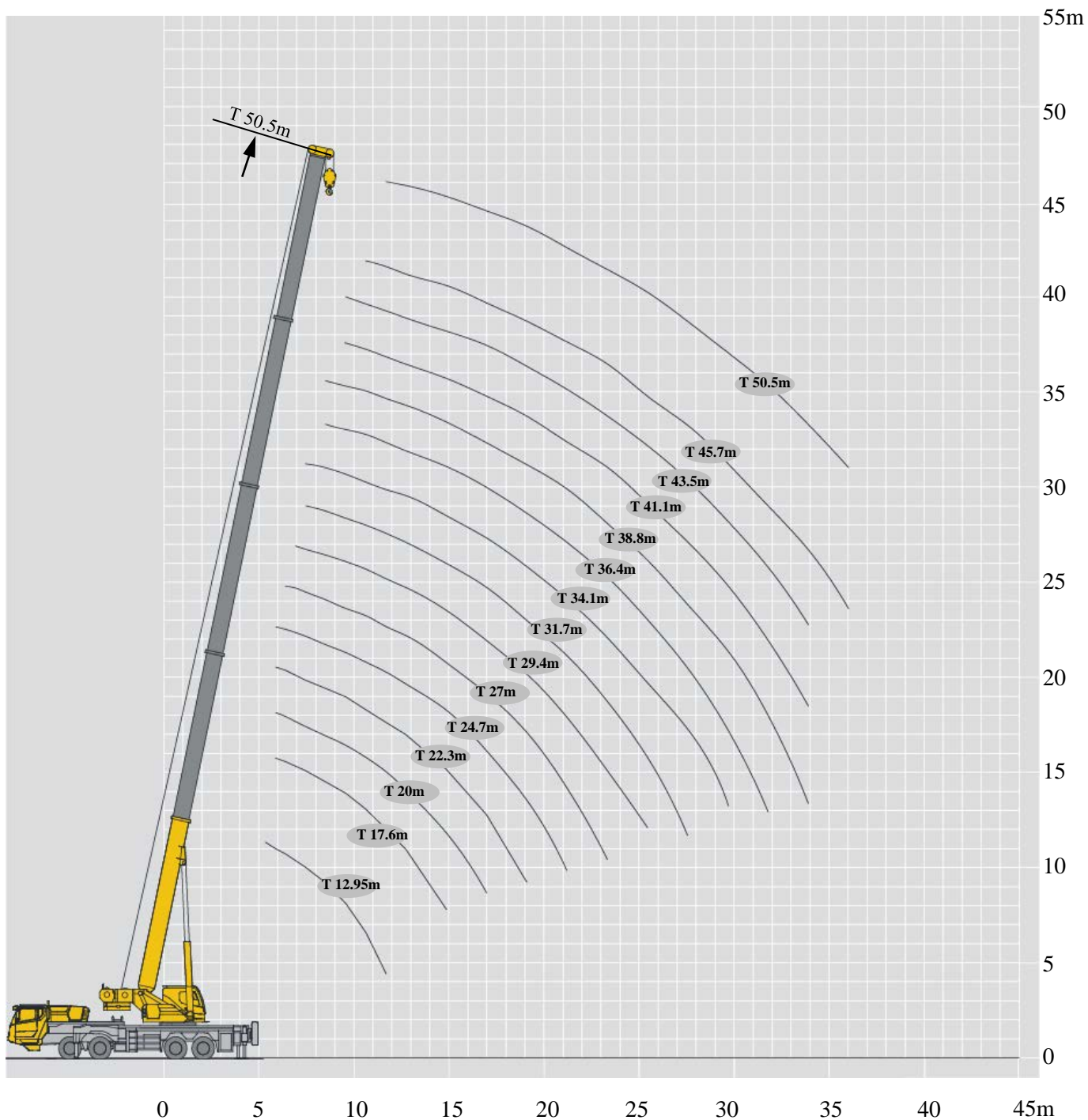
T: 12.95~50.5m

副臂
Jib

T: 50.5m
J: 10.5~17.5 m

主臂加长节
Telescopic boom extension

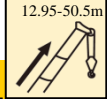
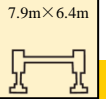

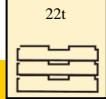
T: 50.5m
I: 9m
J: 10.5~17.5m


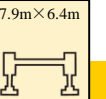
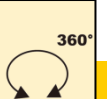
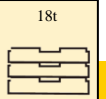


起重性能表

Lifting capacities

T 12.95~50.5m

	   																	
	12.95m	17.6m	20m	22.3m	24.7m	27m	29.4m	31.7m	34.1m	36.4m	38.8m	41.1m	41.1m	43.5m	45.7m	45.7m		50.5m
3	100.0	68.0	36.0															3
3.5	76.0	66.0	36.0															3.5
4	67.0	65.0	36.0															4
5	62.0	59.0	36.0	50.0	37.0	37.2	35.5											5
6	51.0	50.0	36.0	46.0	37.0	36.5	35.5	35.0										6
7	43.0	42.0	36.0	44.0	37.0	35.0	35.5	33.0	17.5	24.3								7
8	36.0	35.0	36.0	37.6	37.0	33.0	35.0	31.0	17.5	24.0	18.5	21.2	12.5					8
9	32.0	31.0	35.0	32.6	34.3	30.0	33.8	28.0	17.5	24.0	18.5	21.0	12.5	15.9	18.8	17.0		9
10		27.0	30.9	27.5	29.9	29.0	29.2	25.0	17.5	24.0	18.5	19.5	12.5	15.9	17.2	16.0	13.7	10
12		20.0	22.5	19.5	21.6	23.4	23.6	22.0	17.5	22.0	18.5	17.0	12.5	15.9	15.2	14.9	13.5	12
14			17.3	14.4	16.5	18.1	18.0	19.4	16.7	18.8	17.4	15.2	12.5	15.9	13.5	13.7	12.9	14
16				11.0	12.9	14.5	14.2	15.5	15.0	14.9	16.0	14.0	12.2	13.8	12.0	12.5	11.5	16
18					10.3	11.9	11.3	12.6	13.3	12.2	13.1	12.5	11.1	12.2	11.0	11.2	10.4	18
20						9.9	9.2	10.5	11.6	10.0	11.0	10.4	10.2	10.5	10.0	9.9	9.3	20
22							7.5	8.8	9.9	8.3	9.3	8.6	9.3	8.8	8.9	8.5	8.3	22
24								7.4	8.5	6.9	7.9	7.3	8.6	7.4	7.6	7.8	7.0	24
26									7.3	5.8	6.7	6.2	7.6	6.3	6.5	7.0	6.4	26
28										4.8	5.8	5.2	6.7	5.3	5.5	6.1	5.7	28
30											5.0	4.4	5.8	4.6	4.7	5.3	4.8	30
32											4.3	3.7	5.1	3.9	4.0	4.6	4.2	32
34												3.1	4.5	3.2	3.4	4.0	3.6	34
36														2.8	2.9	3.5	3.0	36
38															2.4	3.0	2.6	38
40																	2.2	40
42																	1.8	42

	   																	
	12.95m	17.6m	20m	22.3m	24.7m	27m	29.4m	31.7m	34.1m	36.4m	38.8m	41.1m	41.1m	43.5m	45.7m	45.7m		50.5m
3	100.0	68.0	36.0															3
3.5	76.0	66.0	36.0															3.5
4	67.0	65.0	36.0															4
5	62.0	59.0	36.0	50.0	37.0	37.2	35.5											5
6	51.0	50.0	36.0	46.0	37.0	36.5	35.5	35.0										6
7	43.0	42.0	36.0	44.0	37.0	35.0	35.5	33.0	17.5	24.3								7
8	36.0	35.0	36.0	37.6	37.0	33.0	35.0	31.0	17.5	24.0	18.5	21.2	12.5					8
9	32.0	31.0	35.0	32.6	34.3	30.0	33.8	28.0	17.5	24.0	18.5	21.0	12.5	15.9	18.8	17.0		9
10		27.0	30.9	27.5	29.9	29.0	29.2	25.0	17.5	24.0	18.5	19.5	12.5	15.9	17.2	16.0	13.7	10
12		20.0	22.5	19.5	21.6	23.4	21.0	22.6	17.5	22.0	18.5	17.0	12.5	15.9	15.2	14.9	13.5	12
14			17.3	14.4	16.5	18.1	16.5	17.4	16.7	16.8	17.4	15.2	12.5	15.9	13.5	13.7	12.9	14
16				11.0	12.9	14.5	12.8	14.0	15.0	13.2	14.3	13.2	12.2	13.8	12.0	12.5	11.5	16
18					10.3	11.9	10.1	11.5	12.6	10.8	11.7	11.3	11.1	11.2	11.0	11.2	10.4	18
20						9.9	8.1	9.4	10.6	9.0	10.0	9.3	10.1	9.5	9.3	9.9	9.3	20
22							6.5	7.8	9.0	7.3	8.4	7.7	9.3	7.9	8.0	8.5	8.3	22
24								6.6	7.7	6.0	7.1	6.5	7.9	6.5	6.7	7.3	7.0	24
26									6.6	5.0	6.0	5.4	6.9	5.5	5.6	6.3	5.9	26
28										4.1	5.1	4.5	6.0	4.6	4.7	5.4	5.1	28
30											4.3	3.7	5.2	3.8	3.9	4.6	4.2	30
32												3.0	4.5	3.2	3.3	4.0	3.6	32
34														2.6	2.7	3.4	3.0	34
36															2.3	2.9	2.5	36
38																	2.1	38
40																	1.7	40